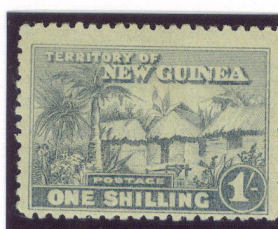
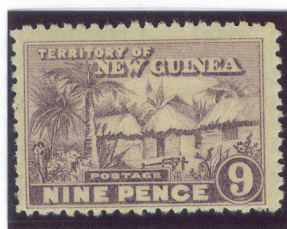
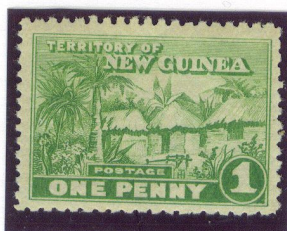


Mandated Territory of New Guinea

Huts issues 1925 - 1927

On 17 December 1920 the Council of the League of Nations gave Australia a "C" class Mandate over the area known as the Territory of New Guinea. This territory consisted of approximately one third of the mainland being the north east part of New Guinea (previously known as German New Guinea), the Bismark Archipelago and the Bougainville district. The mandate gave Australia authority to govern the former German colony and to report regularly. This administration remained in force until 1942.

Up until 1925, the Mandated Territory used Australian stamps overprinted N.W. Pacific Islands which were first issued in 1915. The first issue of stamps designed specifically for the Mandated Territory were "The Huts". The values of this issue ranged from 1/2d to 1 pound. This display will focus on the definitive issues only.



This display's information is sourced mainly from the work "The Stamps of the Territory of New Guinea - 1925 - 1932 Huts Issues" by R Heward, R Garratt and D Heward.