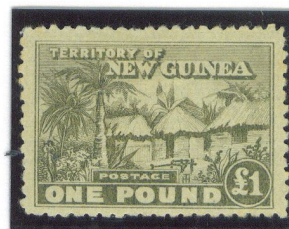
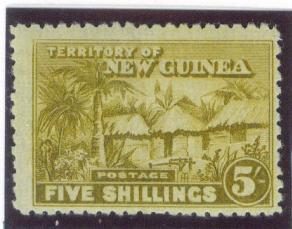


Mandated Territory of New Guinea

Huts issues 1925 - 1927

The final design of these issues was produced by Ronald Harrison, son of Thomas Harrison, the government stamp printer. The die was recess engraved in reverse by TS Harrison from his son's design. His initials TH are on every stamp with the T over the H. It is known that although R Harrison was an excellent designer, his engraving skills were not equal to his father's. From extensive study, no flaws have been found in the pictorial design/vignette, which confirms the quality of both TS Harrison's original engraving and its transfer to the master cylinder and through to the value plates.

The following stamps continue with the set as discussed plus some multiples and a located variety.



The following stamp is the variety - "Dot in top right hand arm of 'H' of "Halfpence". Position No 30 of the top pane.



On the following page is a full pane of 30 stamps. Whether it is top or bottom is hard to distinguish. It requires perforation errors or gumming errors to be certain.