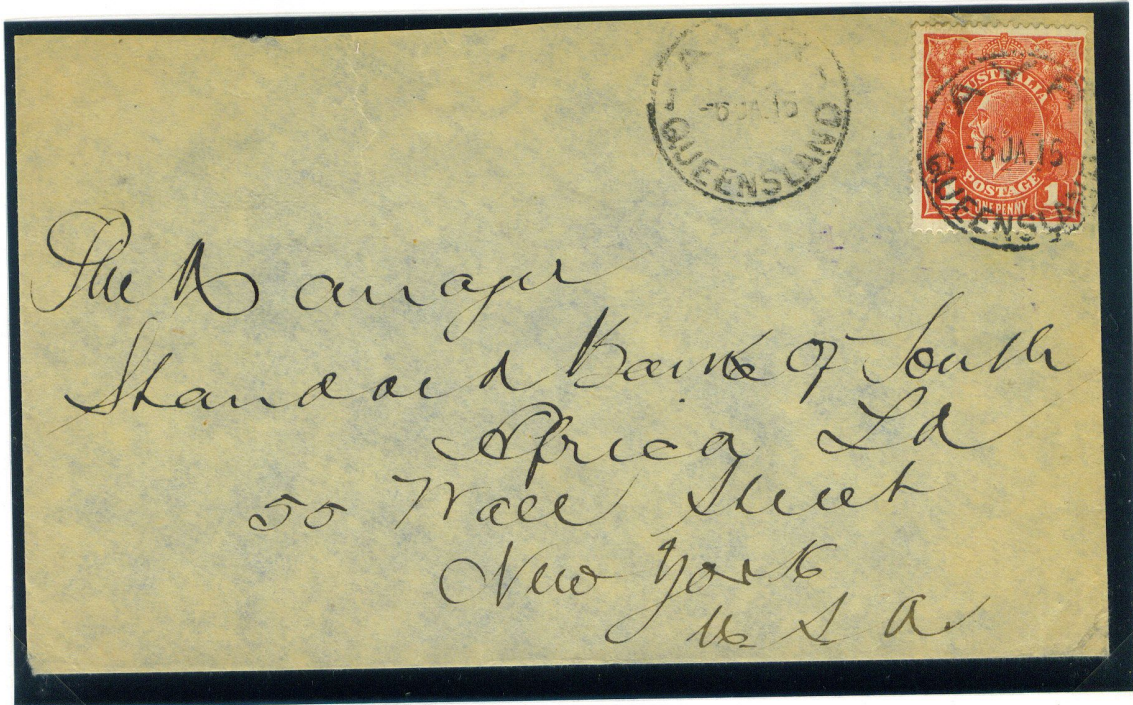
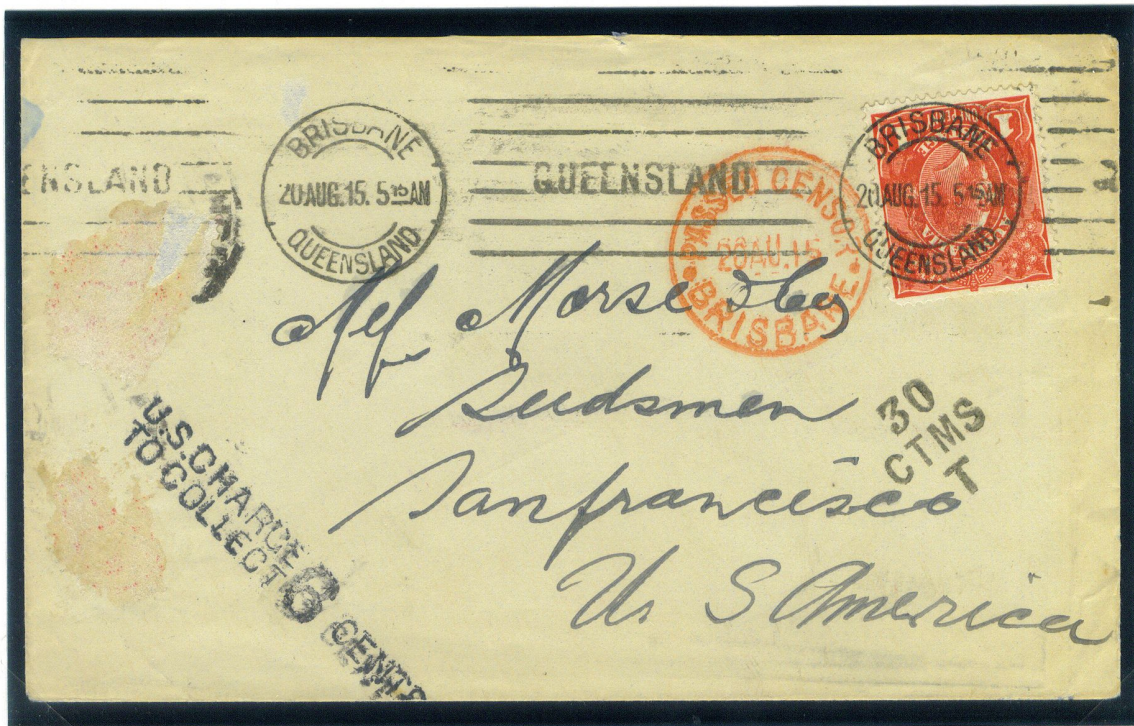


# HOW FAR DID A PENNY GO IN 1915



6 January 1915: A business letter from Ayr (Qld) to New York (15,441 km in a direct line!)

The correct rate for this route was 3d, so this letter should have been taxed – but it wasn't. Real value for 1d!



20 August 1915: A business letter (correctly taxed and censored) from Brisbane to San Francisco (11,388 km)